

## Signia App Set-up Instructions for Non-Wireless Hearing Aids:

Download the Signia app from the App Store or Google Play store. The app is compatible with iOS 9.3 and higher and Android version 5.0 and higher.

The setup process consists of the following steps:

- Screen 1:** "CONNECT HEARING INSTRUMENTS" - Choose a connection option. Options include Telecare code, QR code, Bluetooth, and Manual. The "Manual" option is selected.
- Screen 2:** "CONNECT HEARING INSTRUMENTS" - Is your hearing instrument a "Run" model? Options: Behind the ear, In ear. "No" is selected.
- Screen 3:** "CONNECT HEARING INSTRUMENTS" - Prepare the connection. Step 1: Please go to a quiet environment and then switch your hearing instruments OFF and ON. Step 2: Place the hearing instruments in your ears before pressing "Connect now". "Connect now" is selected.
- Screen 4:** "CONNECT HEARING INSTRUMENTS" - Confirmation tone. A confirmation tone is played from the hearing instruments. "Yes" is selected.
- Screen 5:** "CONNECT HEARING INSTRUMENTS" - Do your hearing aids support Spatial Configurator? A directional hearing diagram is shown. "Yes" is selected.
- Screen 6:** "CONNECT HEARING INSTRUMENTS" - Do you know the number of hearing programs? Options: 1 program, 2 programs, 3 programs, 4 programs, 5 programs, 6 programs, I don't know. "I don't know" is selected.

**Step 1:** Select Manual to set up non-wireless hearing aids

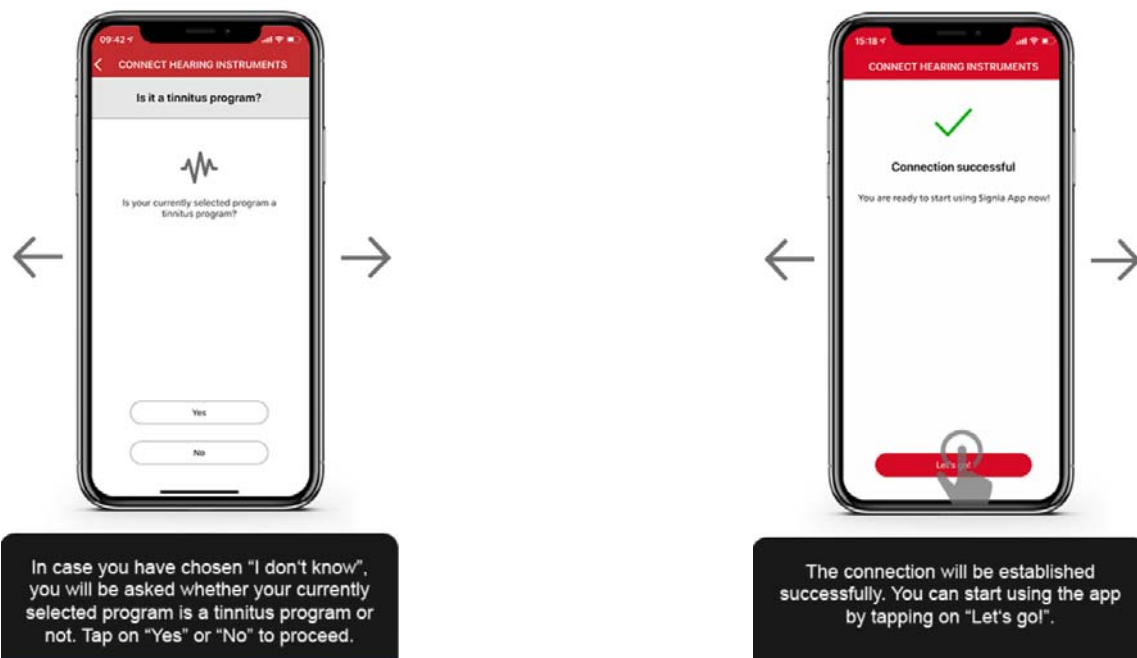
**Step 2:** When asked if your hearing aid is a Run model, select NO to proceed

**Step 3:** Follow the steps described to prepare the connection and tap "Connect now".

**Step 4:** You will hear a confirmation tone in your hearing instruments. If you hear it, please tap "Yes". If you do not hear it, please tap "No" and the confirmation tone will be re-sent.

**Step 5:** First you will be asked whether your hearing aids support the Directional Hearing (Spatial Configurator) function. Tap "Yes" or "No" to proceed.

**Step 6:** Next you will be asked how many hearing programs you have in your hearing aids. Please choose the correct option in case you know it. If not, please tap on "I don't know" at the bottom.



FOR MORE INFORMATION: see the interactive user guide: <https://www.signia-hearing.com/signia-app/>

For assistance with pairing and using the Signia app, please call the **Consumer Hotline: 800-350-6093**