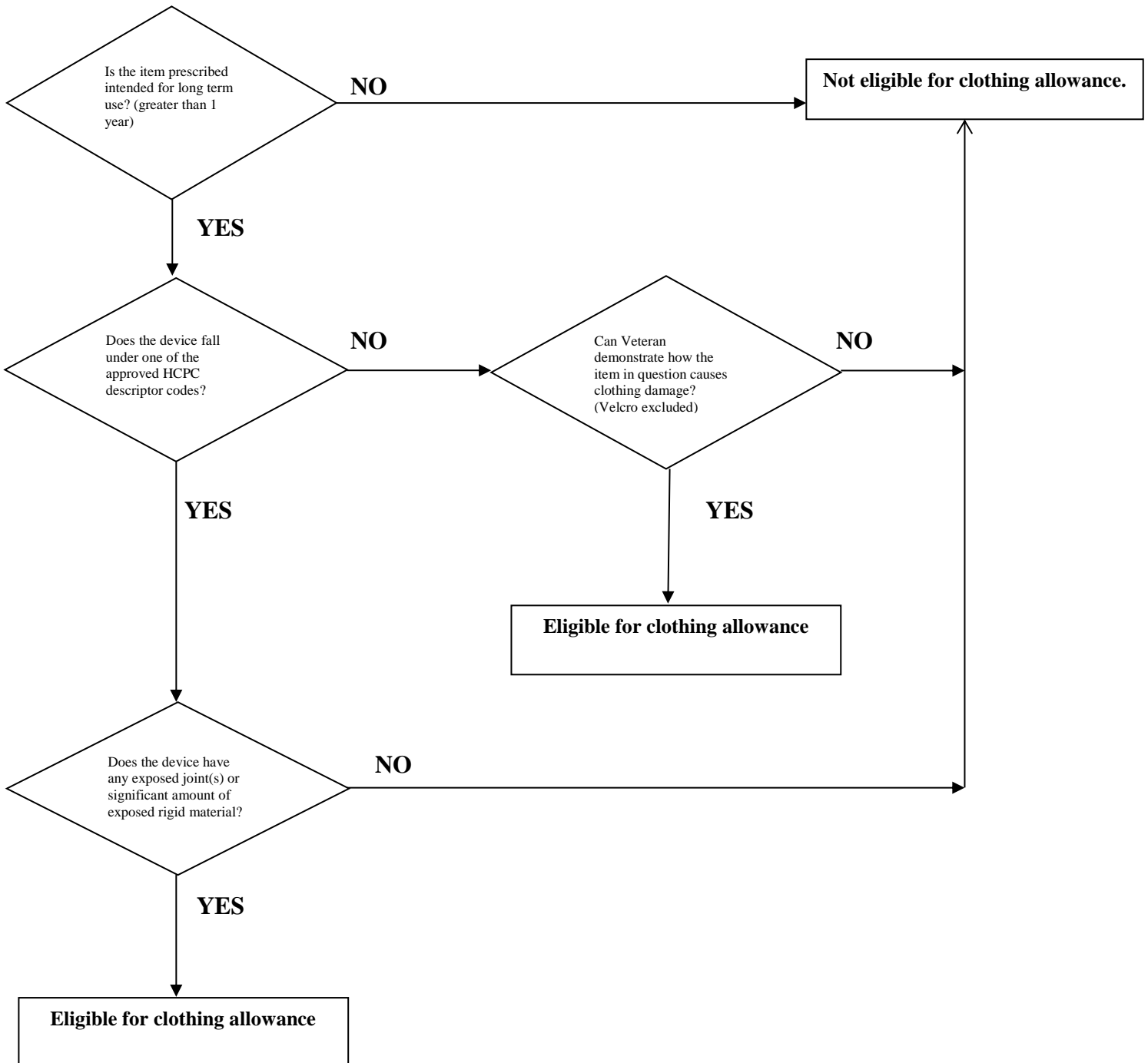


## Flowchart for Helping to Determine eligibility of clothing allowance based on Orthotic/Prosthetic devices



## Recommended HCPC's eligible for Clothing Allowance

Note: The following list represents HCPC codes that may indicate eligibility for clothing allowance awards. The codes in this list are not intended to give an automatic approval, but are to be used as a guide as to when an item should be considered.

Velcro strapping or different sized clothing are not factors to be considered with clothing allowance.

Should a veteran provide evidence of clothing damage, caused by a particular orthotic device which not represented by any of the codes contained in this list (and not due to factors deemed ineligible, such as those mentioned above), then strong consideration should be given to authorizing clothing allowance.

*Codes for cervical orthoses are not included as these devices are usually intended for emergency/short term use.*

*Lumbosacral orthoses, in general, are excluded as they are usually off the shelf with adequate coverage on their rigid panels. There are few, if any, moving parts.*

*Wrist hand finger orthoses are not typically damaging to clothing, so the codes for these devices were excluded from the list.*

### Spinal

**L0458** - TLSO, triplanar control, modular segmented spinal system, two rigid plastic shells, posterior extends from the sacrococcygeal junction and terminates just inferior to the scapular spine, anterior extends from the symphysis pubis to the xiphoid, soft liner, restricts gross trunk motion in the sagittal, coronal, and transverse planes, lateral strength is provided by overlapping plastic and stabilizing closures, includes straps and closures, prefabricated, includes fitting and adjustment.

**L0460** - TLSO, triplanar control, modular segmented spinal system, two rigid plastic shells, posterior extends from the sacrococcygeal junction and terminates just inferior to the scapular spine, anterior extends from the symphysis pubis to the sternal notch, soft liner, restricts gross trunk motion in the sagittal, coronal, and transverse planes, lateral strength is provided by overlapping plastic and stabilizing closures, includes straps and closures, prefabricated, includes fitting and adjustment.

**L0462** - TLSO, triplanar control, modular segmented spinal system, three rigid plastic shells, posterior extends from the sacrococcygeal junction and terminates just inferior to the scapular spine, anterior extends from the symphysis pubis to the sternal notch, soft liner, restricts gross trunk motion in the sagittal, coronal, and transverse planes, lateral strength is provided by overlapping plastic and stabilizing closures, includes straps and closures, prefabricated, includes fitting and adjustment.

**L0464** - TLSO, triplanar control, modular segmented spinal system, four rigid plastic shells, posterior extends from sacrococcygeal junction and terminates just inferior to scapular spine, anterior extends from symphysis pubis to the sternal notch, soft liner, restricts gross trunk motion in the sagittal, coronal, and transverse planes, lateral strength is provided by overlapping plastic and stabilizing closures, includes straps and closures, prefabricated, includes fitting and adjustment.

**L0466** - TLSO, sagittal control, rigid posterior frame and flexible soft anterior apron with straps, closures and padding, restricts gross trunk motion in sagittal plane, produces intracavitary pressure to reduce load on intervertebral disks, prefabricated item that has been trimmed, bent, molded, assembled, or otherwise customized to fit a specific patient by an individual with expertise.

**L0468** - TLSO, sagittal-coronal control, rigid posterior frame and flexible soft anterior apron with straps, closures and padding, extends from sacrococcygeal junction over scapulae, lateral strength provided by pelvic, thoracic, and lateral frame pieces, restricts gross trunk motion in sagittal, and coronal planes, produces intracavitary pressure to reduce load on intervertebral discs, includes fitting and shaping the frame, prefabricated, includes fitting and adjustment

**L0470** - TLSO, sagittal-coronal control, rigid posterior frame and flexible soft anterior apron with straps, closures and padding, extends from sacrococcygeal junction over scapulae, lateral strength provided by pelvic, thoracic, and lateral frame pieces, restricts gross trunk motion in sagittal, and coronal planes, produces intracavitary pressure to reduce load on intervertebral discs, includes fitting and shaping the frame, prefabricated, includes fitting and adjustment.

**L0472** - TLSO, triplanar control, hyperextension, rigid anterior and lateral frame extends from symphysis pubis to sternal notch with two anterior components (one pubic and one sternal), posterior and lateral pads with straps and closures, limits spinal flexion, restricts gross trunk motion in sagittal, coronal, and transverse planes, includes fitting and shaping the frame, prefabricated, includes fitting and adjustment.

**L0480** - TLSO, triplanar control, hyperextension, rigid anterior and lateral frame extends from symphysis pubis to sternal notch with two anterior components (one pubic and one sternal), posterior and lateral pads with straps and closures, limits spinal flexion, restricts gross trunk motion in sagittal, coronal, and transverse planes, includes fitting and shaping the frame, prefabricated, includes fitting and adjustment

**L0482** - TLSO, triplanar control, one piece rigid plastic shell with interface liner, multiple straps and closures, posterior extends from sacrococcygeal junction and terminates just inferior to scapular spine, anterior extends from symphysis pubis to sternal notch, anterior or posterior opening, restricts gross trunk motion in sagittal, coronal, and transverse planes, includes a carved plaster or cad-cam model, custom fabricated

**L0484** - TLSO, triplanar control, two piece rigid plastic shell without interface liner, with multiple straps and closures, posterior extends from sacrococcygeal junction and terminates just inferior to scapular spine, anterior extends from symphysis pubis to sternal notch, lateral strength is enhanced by overlapping plastic, restricts gross trunk motion in the sagittal, coronal, and transverse planes, includes a carved plaster or cad-cam model, custom fabricated

**L0486** - TLSO, triplanar control, two piece rigid plastic shell with interface liner, multiple straps and closures, posterior extends from sacrococcygeal junction and terminates just inferior to scapular spine, anterior extends from symphysis pubis to sternal notch, lateral strength is enhanced by overlapping plastic, restricts gross trunk motion in the sagittal, coronal, and transverse planes, includes a carved plaster or cad-cam model, custom fabricated

**L0488** - TLSO, triplanar control, one piece rigid plastic shell with interface liner, multiple straps and closures, posterior extends from sacrococcygeal junction and terminates just inferior to scapular spine, anterior extends from symphysis pubis to sternal notch, anterior or posterior opening, restricts gross trunk motion in sagittal, coronal, and transverse planes, prefabricated, includes fitting and adjustment

**L0490** - TLSO, sagittal-coronal control, one piece rigid plastic shell, with overlapping reinforced anterior, with multiple straps and closures, posterior extends from sacrococcygeal junction and terminates at or before the T-9 vertebra, anterior extends from symphysis pubis to xiphoid, anterior opening, restricts gross trunk motion in sagittal and coronal planes, prefabricated, includes fitting and adjustment

**L0491** - TLSO, sagittal-coronal control, modular segmented spinal system, two rigid plastic shells, posterior extends from the sacrococcygeal junction and terminates just inferior to the scapular spine, anterior extends from the symphysis pubis to the xiphoid, soft liner, restricts gross trunk motion in the sagittal and coronal planes, lateral strength is provided by overlapping plastic and stabilizing closures, includes straps and closures, prefabricated, includes fitting and adjustment

**L0492** - TLSO, sagittal-coronal control, modular segmented spinal system, three rigid plastic shells, posterior extends from the sacrococcygeal junction and terminates just inferior to the scapular spine, anterior extends from the symphysis pubis to the xiphoid, soft liner, restricts gross trunk motion in the sagittal and coronal planes, lateral strength is provided by overlapping plastic and stabilizing closures, includes straps and closures, prefabricated, includes fitting and adjustment

### **Cervical Thoraco Lumbo Sacral Orthoses (CTLSO)**

**L0700** - CTLSO, anterior-posterior-lateral control, molded to patient model, (Minerva type)

**L0710** - CTLSO, anterior-posterior-lateral control, molded to patient model, with interface material, (Minerva type)

**L0810** - Halo procedure, cervical halo incorporated into jacket vest

**L0820** - Halo procedure, cervical halo incorporated into plaster body jacket

**L0830** - Halo procedure, cervical halo incorporated into Milwaukee type orthosis

## **Lower Limb Orthoses Hip Orthoses (HO)**

- L1845** - HO, abduction control of hip joint, postoperative hip abduction type, custom fabricated
- L1686** - HO, abduction control of hip joint, postoperative hip abduction type, prefabricated, includes fitting and adjustment
- L1690** - Combination, bilateral, lumbo-sacral, hip, femur orthosis providing adduction and internal rotation control, prefabricated, includes fitting and adjustment

## **Knee Orthoses (KO)**

- L1820** - KO, elastic with joint(s), includes soft interface material, prefabricated, off-the-shelf
- L1831** - KO, locking knee joint(s), positional orthosis, prefabricated, includes fitting and adjustment
- L1832** - KO, adjustable knee joints, (unicentric or polycentric) positional orthosis, rigid support, prefabricated, item that has been trimmed, bent, molded, assembled, or otherwise customized to fit a specific patient by an individual with expertise
- L1833** - Knee orthosis, adjustable knee joints (unicentric or polycentric), positional orthosis, rigid support, prefabricated, off-the shelf
- L1834** - KO, without knee joint, rigid, custom fabricated
- L1836** - KO, rigid, without joint(s), includes soft interface material, prefabricated, off-the-shelf
- L1840** - KO, derotation, medial-lateral, anterior cruciate ligament, custom fabricated
- L1843** - KO, single upright, thigh and calf, with adjustable flexion and extension joint (unicentric or polycentric), medial-lateral and rotation control, with or without varus/valgus adjustment, prefabricated item that has been trimmed, bent, molded, assembled, or otherwise customized to fit a specific patient by an individual with expertise
- L1844** - KO, single upright, thigh and calf, with adjustable flexion and extension joint (unicentric or polycentric), medial-lateral and rotation control, with or without varus/valgus adjustment, prefabricated item that has been trimmed, bent, molded, assembled, or otherwise customized to fit a specific patient by an individual with expertise
- L1845** - KO, double upright, thigh and calf, with adjustable flexion and extension joint (unicentric or polycentric), medial-lateral and rotation control, with or without

varus/valgus adjustment, prefabricated item that has been trimmed, bent, molded, assembled, or otherwise customized to fit a specific patient by an individual with expertise

**L1846** - KO, double upright, thigh and calf, with adjustable flexion and extension joint (unicentric or polycentric), medial-lateral and rotation control, with or without varus/valgus adjustment, custom fabricated

**L1847** - KO, double upright with adjustable joint, with inflatable air support chamber(s), prefabricated, prefabricated item that has been trimmed, bent, molded, assembled, or otherwise customized to fit a specific patient by an individual with expertise

**L1848** - Knee orthosis, double upright with adjustable joint, with inflatable air support chamber(s), prefabricated, off-the-shelf

### **Ankle Foot Orthoses (AFO)**

**L1900** - AFO, spring wire, dorsiflexion assist calf band, custom fabricated

**L1910** - AFO, posterior, single bar, clasp attachment to shoe counter, prefabricated, includes fitting and adjustment

**L1920** - AFO, single upright with static or adjustable stop (Phelps or Perlstein type), custom fabricated

**L1930** - AFO, plastic or other material, prefabricated, includes fitting and adjustment

**L1932** - AFO, rigid anterior tibial section, total carbon fiber or equal material, prefabricated, includes fitting and adjustment

**L1940** - AFO, plastic or other material, custom fabricated

**L1945** - AFO, plastic, rigid anterior tibial section (floor reaction), custom fabricated

**L1950** - AFO, spiral, (Institute of Rehabilitative Medicine type), plastic, custom fabricated

**L1951** - AFO, spiral, (Institute of Rehabilitative Medicine type), plastic or other material, prefabricated, includes fitting and adjustment

**L1960** - AFO, posterior solid ankle, plastic, custom fabricated

**L1970** - AFO, plastic with ankle joint, custom fabricated

**L1971** - AFO, plastic or other material with ankle joint, prefabricated, includes fitting and adjustment

**L1980** - AFO, single upright free plantar dorsiflexion, solid stirrup, calf band/cuff (single bar "BK" orthosis), custom fabricated

**L1990** - AFO, double upright free plantar dorsiflexion, solid stirrup, calf band/cuff (double bar "BK" orthosis), custom fabricated

### **Knee Ankle Foot Orthoses (KAFO)**

**L2000** - KAFO, single upright, free knee, free ankle, solid stirrup, thigh and calf band/cuffs (single bar "AK" orthosis), custom fabricated

**L2005** - KAFO, any material, single or double upright, stance control, automatic lock and swing phase release, any type activation, includes ankle joint, any type, custom fabricated

**L2010** - KAFO, single upright, free ankle, solid stirrup, thigh and calf band/cuffs (single bar "AK" orthosis), without knee joint, custom fabricated

**L2020** - KAFO, double upright, free ankle, solid stirrup, thigh and calf band/cuffs (double bar "AK" orthosis), custom fabricated

**L2030** - KAFO, double upright, free ankle, solid stirrup, thigh and calf bands/cuffs (double bar "AK" orthosis), without knee joint, custom fabricated

**L2034** - KAFO, full plastic, single upright, with or without free motion knee, medial lateral rotation control, with or without free motion ankle, custom fabricated

**L2036** - KAFO, full plastic, single upright, with or without free motion knee, medial lateral rotation control, with or without free motion ankle, custom fabricated

**L2037** - KAFO, full plastic, single upright, with or without free motion knee, with or without free motion ankle, custom fabricated

**L2038** - KAFO, full plastic, with or without free motion knee, multi-axis ankle, custom fabricated

### **Hip Knee Ankle Foot Orthoses (HKAFO)**

**L2040** - HKAFO, torsion control, bilateral rotation straps, pelvic band/belt, custom fabricated

**L2050** - HKAFO, torsion control, bilateral torsion cables, hip joint, pelvic band/belt, custom fabricated

**L2060** - HKAFO, torsion control, bilateral torsion cables, ball bearing hip joint, pelvic band/belt, custom fabricated

**L2070** - HKAFO, torsion control, unilateral rotation straps, pelvic band/belt, custom fabricated

**L2080** - HKAFO, torsion control, unilateral rotation straps, pelvic band/belt, custom fabricated

**L2090** - HKAFO, torsion control, unilateral rotation straps, pelvic band/belt, custom fabricated

### **Upper Limb Orthoses Shoulder Orthoses (SO)**

**L3674** - SO, abduction positioning (airplane design), thoracic component and support bar, with or without nontorsion

### **Elbow Orthoses (EO/EWHO/EWHFO)**

**L3720** - EO, double upright with forearm/arm cuffs, free motion, custom fabricated

**L3730** - EO, double upright with forearm/arm cuffs, extension/flexion assist, custom fabricated

**L3740** - EO, double upright with forearm/arm cuffs, adjustable position lock with active control, custom fabricated

**L3760** - EO, with adjustable position locking joint(s), prefabricated, includes fitting and adjustments, any type

**L3762** - EO, rigid, without joints, includes soft interface material, prefabricated, off-the-shelf

**L3763** - EWHO, rigid, without joints, may include soft interface, straps, custom fabricated, includes fitting and adjustment

**L3764** - EWHO, includes one or more nontorsion joints, elastic bands, turnbuckles, may include soft interface, straps, custom fabricated, includes fitting and adjustment

**L3765** - EWHFO, rigid, without joints, may include soft interface, straps, custom fabricated, includes fitting and adjustment

**L3766** - EWHFO, includes one or more nontorsion joints, elastic bands, turnbuckles, may include soft interface, straps, custom fabricated, includes fitting and adjustment

### **Shoulder Elbow Wrist Hand Orthoses (SEWHO)**

**L3960** - SEWHO, abduction positioning, airplane design, prefabricated, includes fitting and adjustment

**L3961** - SEWHO, shoulder cap design, without joints, may include soft interface, straps, custom fabricated, includes fitting and adjustment



**L3962** - SEWHO, abduction positioning, Erbs palsy design, prefabricated, includes fitting and adjustment

**L3967** - SEWHO, abduction positioning (airplane design), thoracic component and support bar, without joints, may include soft interface, straps, custom fabricated, includes fitting and adjustment

**L3971** - SEWHO, shoulder cap design, includes one or more nontorsion joints, elastic bands, turnbuckles, may include soft interface, straps, custom fabricated, includes fitting and adjustment

**L3973** - SEWHO, abduction positioning (airplane design), thoracic component and support bar, includes one or more nontorsion joints, elastic bands, turnbuckles, may include soft interface, straps, custom fabricated, includes fitting and adjustment

**L3975** - SEWHFO, shoulder cap design, without joints, may include soft interface, straps, custom fabricated, includes fitting and adjustment.

**L3976** - SEWHFO, abduction positioning (airplane design), thoracic component and support bar, without joints, may include soft interface, straps, custom fabricated, includes fitting and adjustment

**L3977** - SEWHFO, shoulder cap design, includes one or more nontorsion joints, elastic bands, turnbuckles, may include soft interface, straps, custom fabricated, includes fitting and adjustment

**L3978** - SEWHFO, abduction positioning (airplane design), thoracic component and support bar, includes one or more nontorsion joints, elastic bands, turnbuckles, may include soft interface, straps, custom fabricated, includes fitting and adjustment

#### **Prosthetics:**

##### **Lower Limb Prosthetics:**

**Any Veteran with a service connected amputation proximal to the level of toe amputations, and wears a prosthesis, should be eligible for clothing allowance for the amputated limb.**

##### **Upper limb Prosthetics:**

**Any Veteran with a service connected amputation proximal to the level of finger amputations, and wears a prosthesis, should be eligible for clothing allowance for the amputated limb.**